



# DATA ANALYTICS FOR MISSOURI SCHOOLS

# POWERFUL DATA ANALYTIC TOOLS BUILT TO DRIVE DECISIONS WITH STATEWIDE INFORMATION

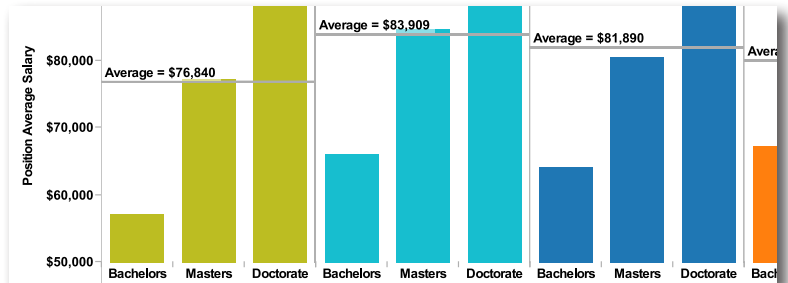


# Sight FOR MISSOURI SCHOOLS

Delivering data and interactive analytics covering key areas of school operations including...

## STAFFING AND COMPENSATION

Analyze compensation levels and staffing ratios by position. Compare the results to area districts or custom built peer groups.



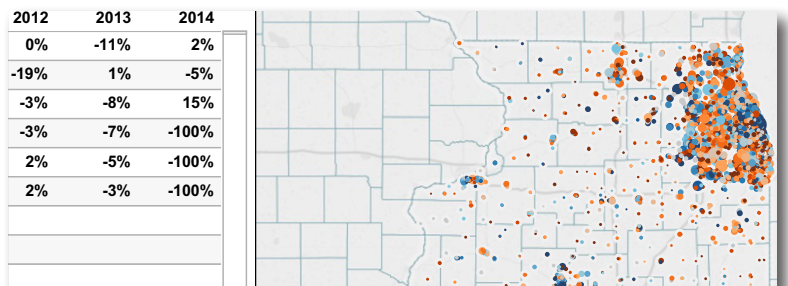
## ACADEMIC PERFORMANCE

Generate new insights on student achievement with powerful trend and comparison data. Create data visuals at the District or Building level.



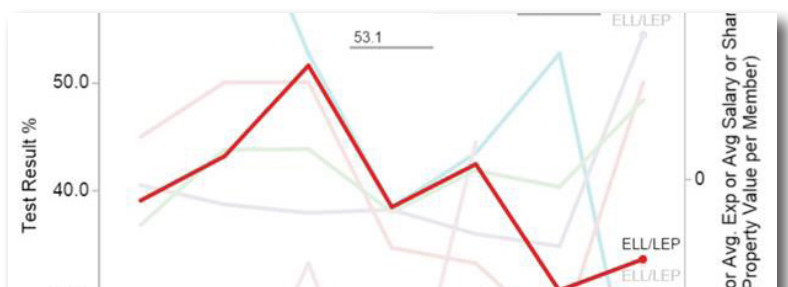
## ENROLLMENT TRENDS AND DEMOGRAPHICS

Develop enrollment projections at the District and Building level. Use the historical database to identify changing demographic trends.



## ENGLISH LANGUAGE LEARNERS

Analyze historical test performance for ELL students and identify service opportunities.



## BUDGET PERFORMANCE

Identify financial opportunities with the comparative analytics engine. Slice and filter your financial data to track performance against KPIs.

Fund	Object Revenue Level 1	Object Revenue Level 2	2011	2012
17 Special Reserve Fund for Other Than ...	8000-8799 Revenues	8800-8799 Other Local Revenue	\$30,890	\$42,787
		Total	\$30,890	\$42,787
21 Building Fund	8000-8799 Revenues	8800-8799 Other Local Revenue	\$0	\$0
		Total	\$0	\$0
35 County School Facilities Fund	8000-8799 Revenues	8800-8799 Other Local Revenue	\$21,391	\$28,556
		Total	\$21,391	\$28,556
	8800-8999 Other Financing Sources	8900-8929 Interfund Transfers in		
		Total		
51 Bond Interest and Redemption Fund	8000-8799 Revenues	8300-8599 Other State Revenue	\$29,459	\$28,957
		8800-8799 Other Local Revenue	\$3,404,147	\$3,336,000
		Total	\$3,433,606	\$3,364,957

# FORECAST5 OFFERS UNIQUE ANALYTIC SOLUTIONS THAT FOCUS ON THE PRESSING ISSUES IN MISSOURI EDUCATION

---

Schools across the nation are using Forecast5 applications to...

## **Save Time and Create Efficiency**

Forecast5 applications allow school administrators to complete projects and answer questions efficiently and effectively.

## **Generate Financial Opportunities**

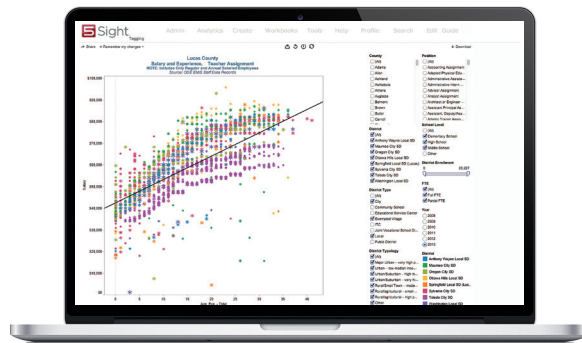
Forecast5 applications can generate actionable business strategies that can save schools money and ensure that budgets are aligned with strategic objectives.

## **Communicate Effectively with Stakeholders**

Forecast5 applications allow school administrators to communicate complex issues with confidence and compelling visualizations of data.

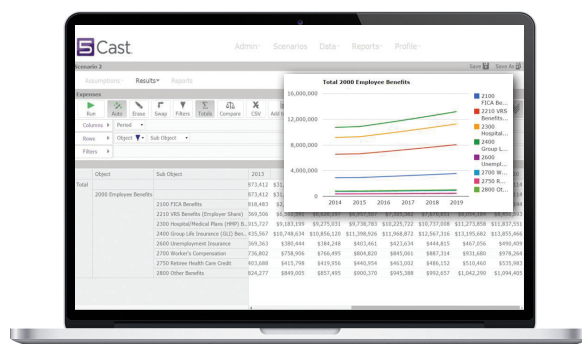
# Sight

An analytics tool that allows users to generate business insights with performance data and the ability to create customized benchmark peer groups.



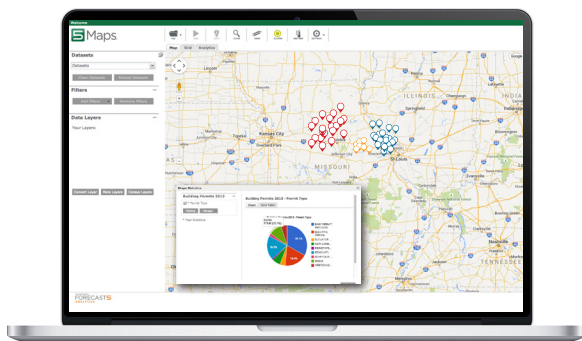
# Cast

A powerful budgeting and forecasting tool that allows users to simulate “what-if” scenario analysis for the purpose of developing multi-year financial forecasts.



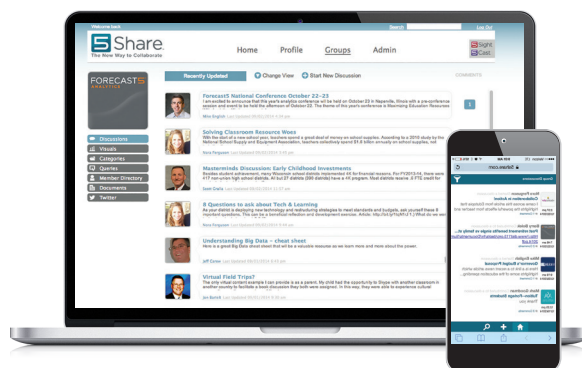
# Maps

A geospatial analytics tool that provides actionable insights with visual perspectives into geographic referenced data.



# Share

A private online community that has been designed for peer to peer communication to maximize the use of data and analytics.



## ILLINOIS ASSOCIATION OF SCHOOL BUSINESS OFFICIALS

"Forecast5 takes mountains of data already generated by districts and makes it usable, accessible and comparable. With this information in the hands of our members, I am convinced that the landscape of decision making will change rapidly from those based on assumptions to those driven by real data. Illinois ASBO is proud to be a Corporate Partner with Forecast5. This will be a game-changer for education in Illinois and across the nation."

— *Dr. Michael Jacoby,*  
*Executive Director, Illinois Association*  
*of School Business Officials*

## TEXAS ASSOCIATION OF SCHOOL BUSINESS OFFICIALS

"TASBO prides itself on being the trusted resource for school finance and operations within the state and has historically given members a rich set of financial data in the eFACTS+ platform. We are excited about the transition of this platform to Forecast5. The 5Sight product takes the data previously available through eFACTS+ to a higher level by adding new features, additional metrics and rich visualizations."

— *Tracy Ginsburg,*  
*Executive Director, Texas Association*  
*of School Business Officials*

## OHIO ASSOCIATION OF SCHOOL BUSINESS OFFICIALS

"Our partnership with Forecast5 will provide district leadership with a tremendous analytical tool set. District financial leaders will be able to effectively leverage existing, but untapped data for fact-based and predictive decision making. The opportunity to turn data into real information that leads to decisions brings great value to districts across the state."

— *David Varda, Executive Director,*  
*Ohio Association of School Business*  
*Officials*

# FORECAST5 ASSOCIATION PARTNERS

## INDIANA ASSOCIATION OF SCHOOL BUSINESS OFFICIALS

"We are excited to have Forecast5 serving Indiana schools with analytic technology that will help identify new opportunities and resources for our students. When we saw what Forecast5 was doing for our neighboring states, we wanted to bring them into Indiana."

— *Dennis Costerison, Executive*  
*Director, Indiana Association of School*  
*Business Officials*

## NEW YORK STATE ASSOCIATION OF SCHOOL BUSINESS OFFICIALS

"NYSASBO believes Forecast5's analytical tools will be a tremendous asset to school districts and their business officials in developing budgets and long-range fiscal plans."

— *Michael J. Borges, Executive*  
*Director, New York State Association*  
*of School Business Officials*

## VIRGINIA ASSOCIATION OF SCHOOL BUSINESS OFFICIALS

"VASBO believes the partnership with Forecast5 Analytics will bring tremendous value to every school division in Virginia, just as it has in many other states. The 5Share communication tool and the 5Sight business analytical tool will provide a much more efficient way to engage in collaborative efforts, analyze targeted data sets, and develop budgets and long-range fiscal plans more strategically."

— *Lisa Frye, Past President, Virginia*  
*Association of School Business Officials*

## FORECAST5 CORPORATE PARTNERS...





## HEALTH INSURANCE

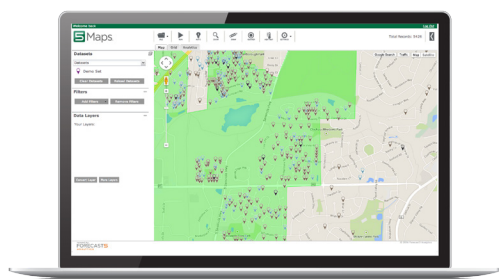
"We used 5Sight to analyze our comparable schools and the medical plans that are offered. We were able to drill down to not only costs of family and single and the portions that each district pays versus the employees, but the deductibles and plan documents provided the opportunity to increase the deductibles of our plans to reduce costs. When sharing this data and information with our employees, we were able to have open and honest conversations that 'driving a Cadillac' is not an option with the costs. Our plans are in line with industry standards and we were able to hold our health care budget FLAT for four years in a row with the use of the cube."

*Assistant Superintendent,  
High School District*

## BOUNDARY ANALYSIS

"5Maps was an invaluable tool during our reorganization process. As we moved from schools of choice to neighborhood schools this was a daunting project. With 7 schools and over 4,000 students, being able to import the data from our student database and have them appear on a map with all of their attributes allowed us to balance our schools. This would have taken thousands of hours without the help of 5Maps. I couldn't imagine doing this without 5Maps. The team at Forecast5 was extremely helpful through the process, helping guide us through setup, use, and through the final upload of our map to allow our community to determine their new school."

*Associate Superintendent,  
K-8 School District*



# CLIENT SUCCESS STORIES

View more stories at [www.forecast5analytics.com](http://www.forecast5analytics.com)

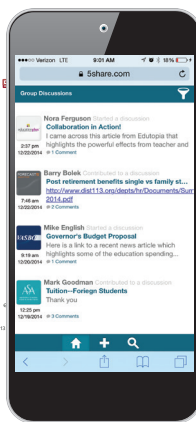
## BUDGETING AND COLLABORATION

"When facing additional budget reductions our district was challenged to find creative ways to continue to balance the budget. Using 5Sight as a resource, decision making was made with ease. Our district was able to view data from comparable schools to learn more about trends in class sizes, salary ranges by position, number of FTE per student population, and dollars allocated by funding source. The 5Sight tool simplified difficult decisions through data driven decision making."

Additionally, I have joined a professional learning network through 5Share, a platform where administrators interested in collaborating share best practices. Shortly after receiving a prompting question about strategic compensation I posted information about the current plan in our district. What followed were many more posts from other districts that shared creative ways to further develop our local comprehensive compensation plan. After receiving this wealth of useful information I soon learned that each individual school will benefit more through the interdependence in 5Share than a school would in isolation."

The tools in 5Sight and 5Share are game changers that every school should be equipped with."

*Superintendent, K-12 School District*



## STAFF NEGOTIATIONS

"We used every single one of your salary and staffing comparison analytics to successfully end our strike. If you ever need someone to speak to the value of this system, let us know and I will be there. We want to continue to use this system however we can."

*Superintendent, K-12 School District*

## TRANSPORTATION

"Early on, with the roll out of Forecast5, I was able to review our district's expenditures in certain areas compared with districts in our part of the state. One of those expenditure comparisons was related to transportation costs, where our district appeared to be rather high in relation to others. The information generated by Forecast5 prompted us to complete a full bidding of transportation services two years ago, which in turn, has resulted in nearly \$1 million in savings annually."

*Administrator, K-12 School District*





2135 CITYGATE LANE, 7TH FLOOR, NAPERVILLE, ILLINOIS 60563  
630.955.7500 | FORECAST5ANALYTICS.COM

---

**For a live demonstration and to learn more  
about Forecast5 Analytics, please contact:**

**Scott Smith**

*SVP Sales and Engagement*

P 630.955.7601

E [ssmith@forecast5analytics.com](mailto:ssmith@forecast5analytics.com)

**Josh Rader**

*Account Executive*

P 630.955.7602

E [jrader@forecast5analytics.com](mailto:jrader@forecast5analytics.com)